

### PLOT DETAILS

LAND USE	COMMERCIAL
BUILDING TYPOLOGY	SELF BUILD PAVILION COUNTRY SMALL
PLOT AREA M2	1,550.00 sq.m
MAXIMUM BUILDABLE ZONE	931.00 sq.m
INDICATIVE GFA (DM)	2,495.50 sq.m
INDICATIVE FAR (DM)	1.61
ASSIGNED BUILDING HEIGHT	15 m
NUMBER OF BASEMENT LEVELS	1 level within buildable zone

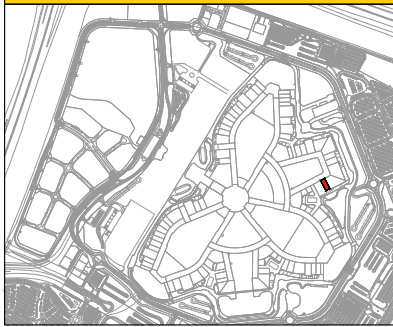
### NOTES

- This plot sheet is subject to change.
- Refer to 'self build pavilion guide' and self-build pavilion delivery guide where appropriate for design guides & controls.
- All dimensions and coordinates are approximate until final survey is carried out by the organiser. All dimensions indicated are in meters.
- All coordinates are based on Dubai local traverse Mercator (DLTM) coordinate system.
- Plot details are based on master plan ref. 10002-DWG-H02000-MP-200003 rev.26 and may be subject to minor changes.
- Participants should abide by Dubai Municipality and Dubai South codes and other authorities as noted in the guidelines.
- All levels are in meters based on Dubai Municipality Datum (DMD).
- Levels may be subject to change and will be communicated as necessary. Level tolerance +/- 50 mm, at time of plot handover to participant.
- GFA does not include basements, please refer to BUA definition for further information.
- Infrastructure allocation is based on DM GFA definition.
- All utility tie-in connections are extended up to 2m inside the plot boundary. However, the exact locations of utility tie-in connections are subject to change and shall be coordinated with the organiser.
- Utility will be protected at the back of house (BOH) access. Participants will be responsible for any additional protection if BOH access is changed.
- Participants are responsible to settle all utility connection fees before the service activation/ deactivation.
- The organiser will build a plot substation (SS) and trench up to 2m within the plot. The participants are responsible to design and build the connection from the tie-in point up to the Main Distribution Board (MDB) or the Air Circuit Breaker (ACB). The maximum distance from the plot SS to the MDB or ACB is 15 meters.
- The storm water drainage shall be designed to discharge from the plot onto front of house (FOH) or back of house (BOH) in accordance with DM standards and guidelines.
- If storm waste storage is required it must be designed for 1 in 10 years storm event for 24 hours. The discharge by pumping from the plot storm storage tank to the main network takes place after storm event.
- The participant is responsible to design and implement an effective temporary works system to avoid any impact or damages to adjacent plots, on plot services or surrounding services during excavation and construction works.
- Plot construction access will be limited to the BOH area. The organiser will install hoarding around the plot boundary. The hoarding maybe shifted by the organiser to allow other projects activities to be completed.
- All tower cranes must be approved by the organiser before erection to manage height and interface coordination.
- The participant is responsible for the protection of underground utilities during all phases ( construction, event and decommissioning).
- Please refer to 10008-SKT-H030000-CE-000798, for typical section detail for utility connections.
- Development on top of the utility easement at the FOH are restricted. Permitted landscaping is limited to interlock paving, grass, low shrubs or any similar removable surface. Other surfaces will require an exceptional permission request.

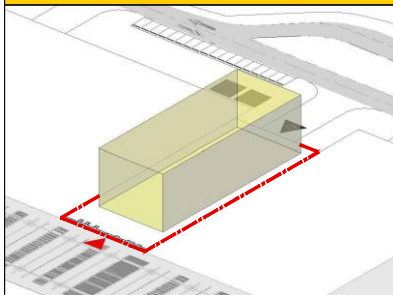
### PLOT COORDINATES TABLE

POINT	EAST	NORTH
1	482074.836	2761782.688
2	482052.680	2761771.108
3	482023.962	2761826.056
4	482046.118	2761837.636

### LOCATION PLAN



### BUILDING ENVELOPE



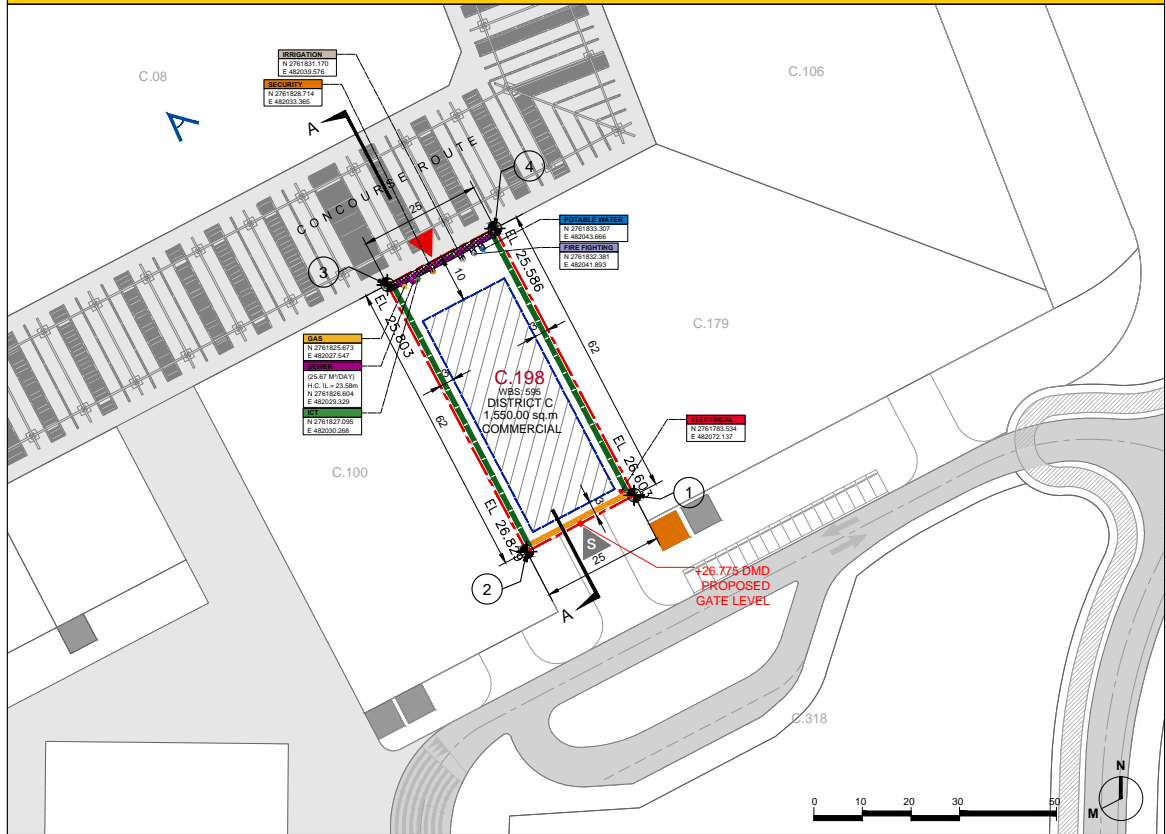
### UTILITY ALLOCATION

DESCRIPTION	DEMAND	FLOW	SIZE	MIN. PRESSURE
TOTAL CONNECTED LOAD	722.00 KW	N/A	Single core cables 630 mm2	N/A
AVERAGE WATER DEMAND	28.52 M <sup>3</sup> /DAY	0.330 l/s	32 mm	1 (bar)
AVERAGE SEWAGE FLOW	25.67 M <sup>3</sup> /DAY	0.297 l/s	200 mm	N/A
AVERAGE IRRIGATION DEMAND	1.95 M <sup>3</sup> /DAY	0.023 l/s	32 mm	3.5 (bar)
PEAK GAS DEMAND (LPG)	2.35 M <sup>3</sup> /HR	TBC	32 mm	1.2 (bar)
FIREFIGHTING NETWORK	N/A	350 g/m	200 mm	6.9 (bar)

### DEFINITIONS

GROSS FLOOR AREA (GFA)	TOTAL FLOOR AREA LESS (AREA OF PARKING LOTS, ACCESS ROADS, LOADING/ UNLOADING BAYS, COVERED WAYS, SWIMMING POOLS, BASEMENTS FLOORS ALLOCATED FOR PARKING AND SERVICES, MECHANICAL SERVICES FLOORS, ROOF SERVICE FLOORS, NON-CLOSED BALCONIES AND TERRACES) BY THE AREA OF THE PLOT.
FLOOR AREA RATIO (FAR)(DM)	THE RATIO RESULTING FROM DIVIDING THE GFA OVER THE TOTAL PLOT AREA. AREAS EXCLUDED FROM THE CALCULATION OF THE TOTAL BUILT UP AREA AS PER DM DEFINITION.
BUILD UP AREA (BUA)	TOTAL COVERED AREA IN A BUILDING OR STRUCTURE MEASURED FROM THE EXTERNAL SIDES OF THE BUILDING, INCLUSIVE OF BALCONIES, TERRACES AND OTHER PROJECTION AS WELL AS ANY OTHER COVERED SPACE SUCH AS CHILDES, LOADING/ UNLOADING BAYS, SERVICE FLOORS, SWIMMING POOLS, STRUCTURED QUEUING AREAS AND ANY OTHER STRUCTURES ON THE PLOTS.
DM	DUBAI MUNICIPALITY

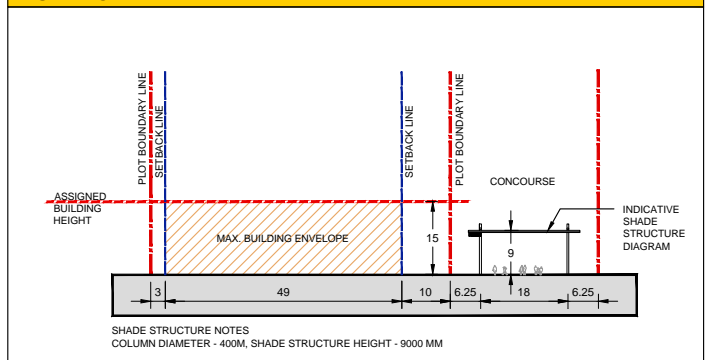
### PLOT GUIDELINES



### KEY

	PLOT BOUNDARY LINE
	SETBACK BUILDING ENVELOPE
	BUILDABLE ZONE
	MAX. BUILDING ENVELOPE
	UTILITY EASEMENT
	INDICATIVE MAIN PUBLIC ENTRANCE
	BOH ACCESS / SERVICE ACCESS
	PLOT COORDINATES
	FINISH GROUND LEVEL
	VIEW ANGLE - MASSING
	PUBLIC STREET EDGE
	SERVICE EDGE
	SHARED EDGE BETWEEN PLOTS
	PLOT 11 KV SUBSTATION (CAPACITY : 1x1000KV TRANSFORMER)
	OTHER 11 KV SUBSTATION

### SECTION - A

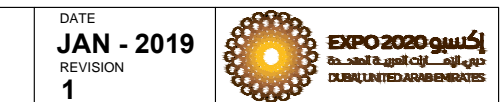


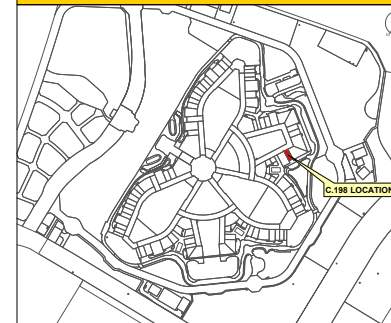
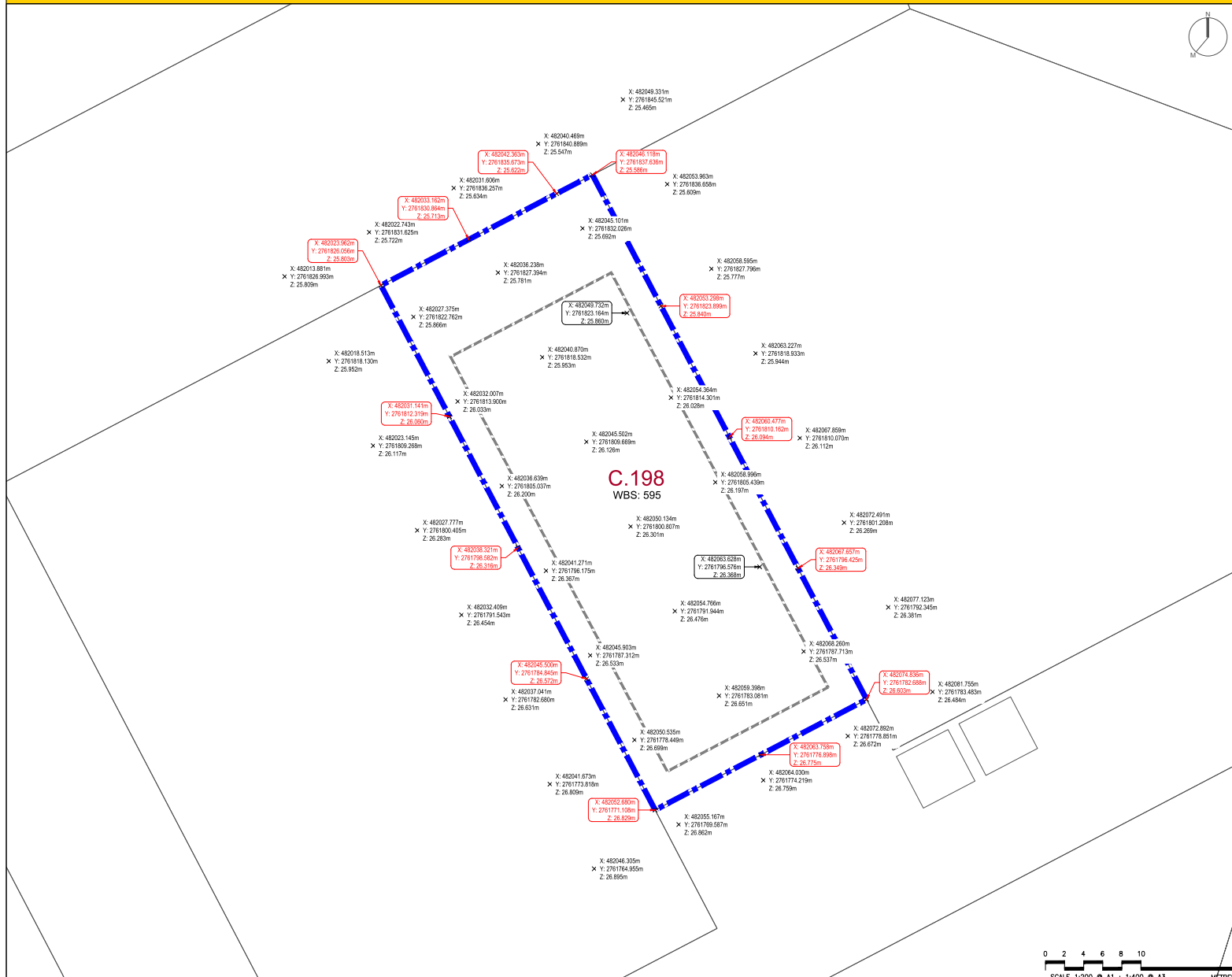
PARTICIPANT  
**COUNTRY SMALL**

PLOT CODE  
**EXPO 2020 DUBAI - PLOT : C.198  
WBS : 595**

PLOT SHEET NUMBER  
**05007-PLP-IPA0034784-AR-000001**

DATE  
**JAN - 2019**  
REVISION  
**1**





NOTES

- All coordinates are based on Dubai Local Transverse Mercator (DLTM) coordinate system.
- All levels are in meters based on Dubai Municipality Datum (DMD).
- Plot sheet details refer to dwg no. 05007-PLP-IPA0034784-AR-000001 rev.1.
- Plot details are based on master plan ref. 10002-DWG-H02000-MP-200003 rev.26 and may be subject to minor changes.
- Plot grading levels are based on dwg ref. 10002-MDL-H021051-LA-900001 rev.13.

KEY

	PLOT BOUNDARY LINE
	SETBACK BUILDING ENVELOPE
X: XXXX Y: XXXX Z: XXXX	FINISH GROUND LEVEL
X: XXXX Y: XXXX Z: XXXX	FINISH GROUND LEVEL AT PLOT BOUNDARY

PARTICIPANT  
**COUNTRY SMALL**

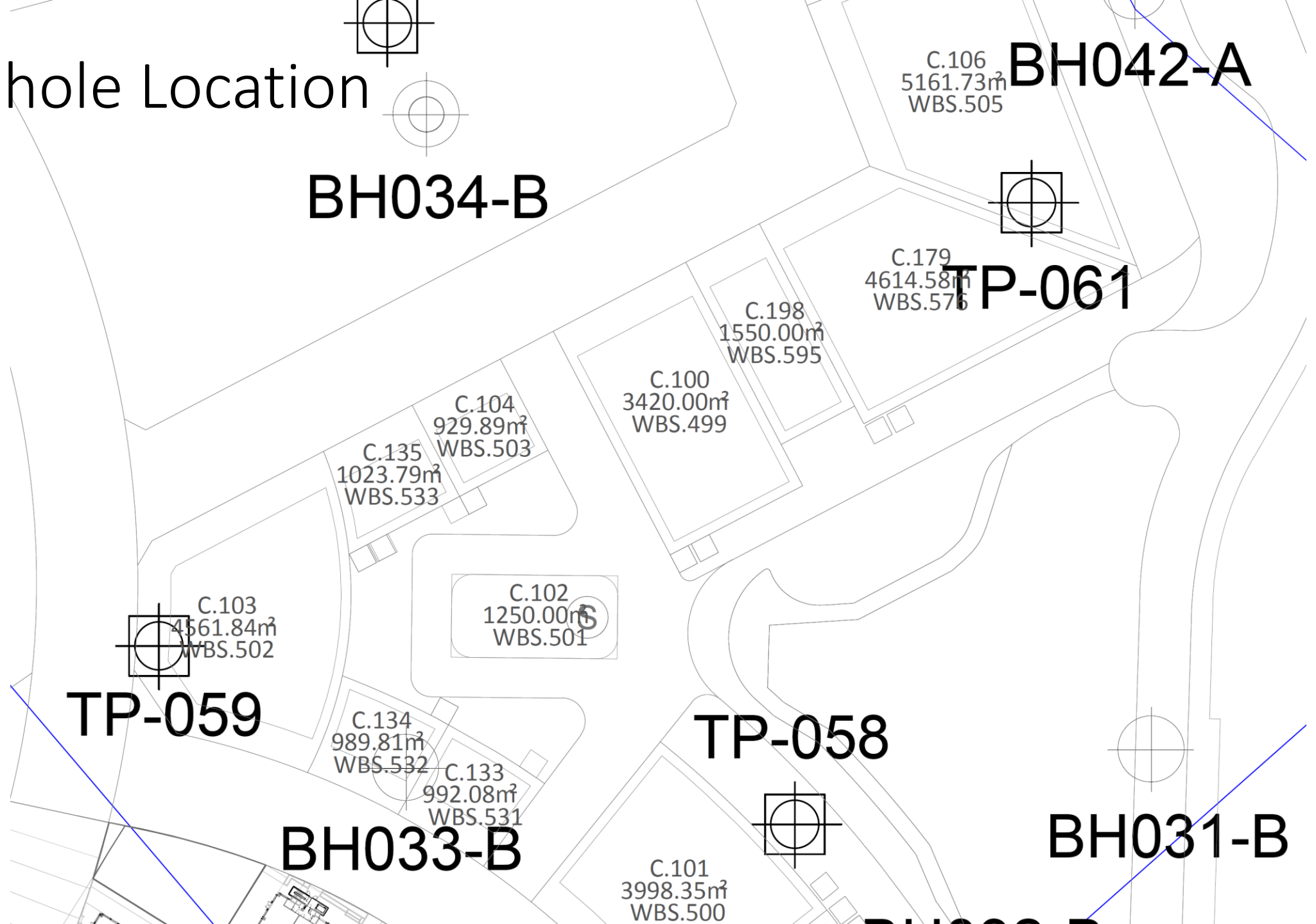
PLOT CODE  
**EXPO 2020 DUBAI - PLOT : C.198  
WBS : 595**

PLOT SHEET NUMBER  
**05007-SKT-IPA0034784-AR-000001**

DATE  
**MAY - 2019**  
REVISION  
**1**



# Borehole Location



**BH034-B**

**BH042-A**

**TP-061**

**TP-059**

**TP-058**

**BH033-B**

**BH031-B**